



DOT HS 811 640

July 2012

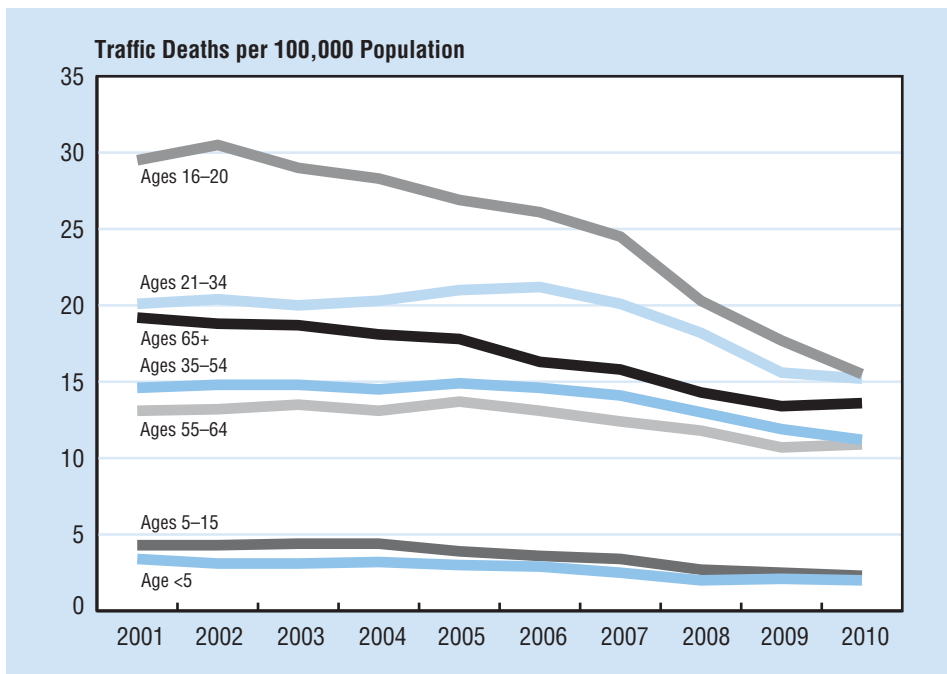
Older Population

This fact sheet focuses on the older population in the United States, defined as all people age 65 and older. In 2010, 13 percent of the total U.S. resident population (40.4 million people) were age 65 and older.

In 2010, 5,484 people age 65 and older were killed and 189,000 were injured in traffic crashes. These older individuals made up 17 percent of all traffic fatalities and 8 percent of all people injured in traffic crashes during the year. Compared to 2009, fatalities among people age 65 and older increased by 3 percent. Among people injured in this age group there was a slight (1%) increase from 2009.

In 2010, 17 percent of all traffic fatalities in the United States were among people age 65 and older.

Figure 1
Motor Vehicle Traffic Fatality Rates by Age Group, 2001–2010



Over three-fourths (79%) of all older occupants of passenger vehicles involved in fatal crashes were using restraints at the time of the crash, compared to 66 percent for other adult occupants (18 to 64 years old).

Table 1

Involvement of the Older Population in Traffic Fatalities by Sex, 2001 and 2010

	2001			2010			Percentage Change, 2001–2010	
	Total	Age 65+	Percentage of Total	Total	Age 65+	Percentage of Total	Total	Age 65+
Population (Thousands)								
Total	284,969	35,290	12.4	309,350	40,438	13.1	9	15
Male	139,891	14,606	10.4	152,108	17,454	11.5	9	19
Female	145,077	20,684	14.3	157,242	22,984	14.6	8	11
Drivers Involved in Fatal Crashes								
Total*	57,586	6,446	11.2	44,440	5,560	12.5	-23	-14
Male	41,901	4,417	10.5	31,965	3,846	12.0	-24	-13
Female	14,919	2,029	13.6	11,811	1,714	14.5	-21	-16
Driver Fatalities								
Total*	25,869	4,012	15.5	21,016	3,398	16.2	-19	-15
Male	19,244	2,697	14.0	15,877	2,304	14.5	-17	-15
Female	6,624	1,315	19.9	5,136	1,094	21.3	-22	-17
Total Traffic Fatalities								
Total*	42,196	6,759	16.0	32,885	5,484	16.7	-22	-19
Male	28,986	3,832	13.2	22,902	3,242	14.2	-21	-15
Female	13,205	2,927	22.2	9,979	2,241	22.5	-24	-23
Occupant Fatalities								
Total*	36,440	5,617	15.4	27,805	4,535	16.3	-24	-19
Male	24,815	3,147	12.7	19,291	2,644	13.7	-22	-16
Female	11,621	2,470	21.3	8,511	1,891	22.2	-27	-23
Pedestrian Fatalities								
Total*	4,901	1,058	21.6	4,280	826	19.3	-13	-22
Male	3,421	609	17.8	2,946	499	16.9	-14	-18
Female	1,479	449	30.4	1,333	326	24.5	-10	-27
Passenger Vehicle Occupant Fatalities								
Total*	32,043	5,437	17.0	22,187	4,116	18.6	-31	-24
Male	20,834	2,987	14.3	14,265	2,268	15.9	-32	-24
Female	11,205	2,450	21.9	7,919	1,848	23.3	-29	-25
Motorcyclist Fatalities								
Total	3,197	82	2.6	4,502	280	6.2	41	241
Male	2,904	78	2.7	4,064	266	6.5	40	241
Female	293	4	1.4	438	14	3.2	49	250
Pedalcyclist Fatalities								
Total	732	69	9.4	618	67	10.8	-16	-3
Male	660	66	10.0	534	60	11.2	-19	-9
Female	72	3	4.2	84	7	8.3	17	133

*Total includes unknown gender.

Older drivers made up 16 percent of all licensed drivers in 2010, compared with 14 percent in 2001.

Among the 65-and-older age group, from 2001 to 2010, the total population increased by 15 percent (increased for males by 19% and for females by 11%). However, driver fatalities for this age group declined by 15 percent (decreased for males by 15% and for females by 17%).

Drivers

There were 34 million licensed older drivers in 2010 (latest data available)—a 22-percent increase from 2001. In contrast, the total number of licensed drivers increased by only 10 percent from 2001 to 2010. Older drivers made up 16 percent of all licensed drivers in 2010, compared with 14 percent in 2001.

As shown in Table 2, of all drivers, older drivers involved in fatal crashes had the lowest proportion of total drivers with a blood alcohol concentration (BAC) of .08 grams per deciliter (g/dL) or higher.

Table 2
Age and Alcohol of Drivers Involved in Fatal Crashes, 2010

Age Group (Years)	Drivers Involved in Fatal Crashes		
	Total	BAC= .08+	
		Number	Percent of Total
<16	160	12	8
16-20	4,487	827	18
21-34	13,125	4,111	31
35-54	14,803	3,436	23
55-64	5,554	769	14
65+	5,560	360	6
Total	*44,440	9,694	22

*Includes 751 drivers of unknown age.

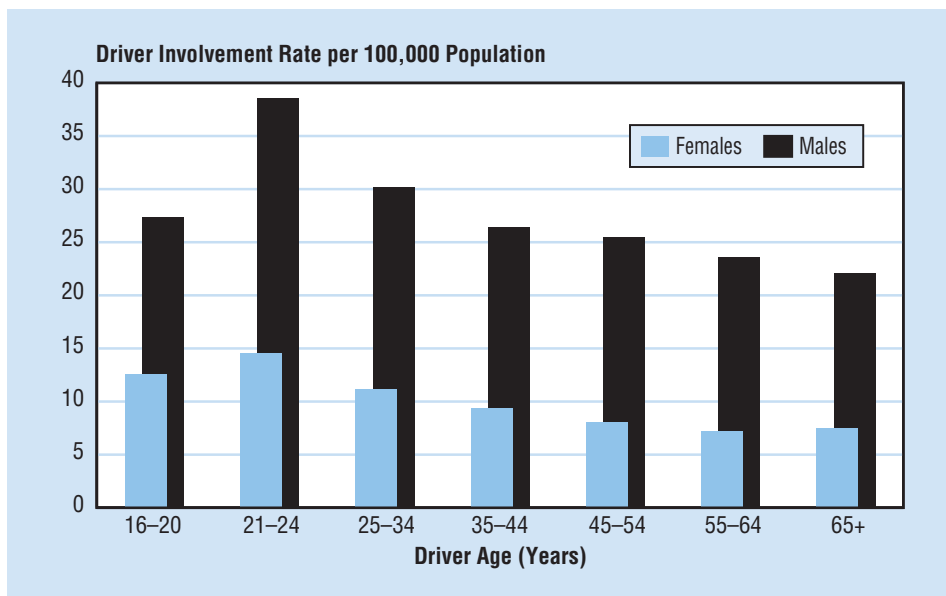
Table 3
Fatalities in Crashes Involving Drivers Age 65 and Older, 2001-2010

Year	2001	2002	2003	2004	2005	2006	2007	2008	2009	2010
Fatalities	6,742	6,663	6,805	6,585	6,647	6,334	6,169	5,825	5,613	5,750

People killed in crashes involving an older driver declined by 15 percent from 6,742 in 2001 to 5,750 in 2010. Since 2009, the number of people killed in crashes involving an older driver increased by 2 percent.

Most traffic fatalities involving older drivers in 2010 occurred during the daytime (77%), occurred on weekdays (71%), and involved other vehicles (66%).

Figure 2
Driver Involvement Rates in Fatal Crashes by Age and Sex, 2010



Fatalities in crashes involving older drivers declined by 15 percent from 2001 to 2010.

For older pedestrians, 63 percent of fatalities in 2010 occurred at non-intersection locations.

Pedestrians

For older people, 63 percent of pedestrian fatalities in 2010 occurred at non-intersection locations. For other pedestrians, 82 percent of fatalities occurred at non-intersection locations.

Among all fatally injured adult pedestrians, older pedestrians had the lowest proportion of pedestrians with a BAC of .08 g/dL or higher.

Table 4

Pedestrian Fatalities by Age Group and BAC, 2010

Age Group (Years)	Total	BAC= .08+	
		Number	Percent of Total
<16	293	8	3
16-20	282	64	23
21-34	876	428	49
35-54	1,371	629	46
55-64	615	203	33
65+	826	74	9
Total	*4,280	1,414	33

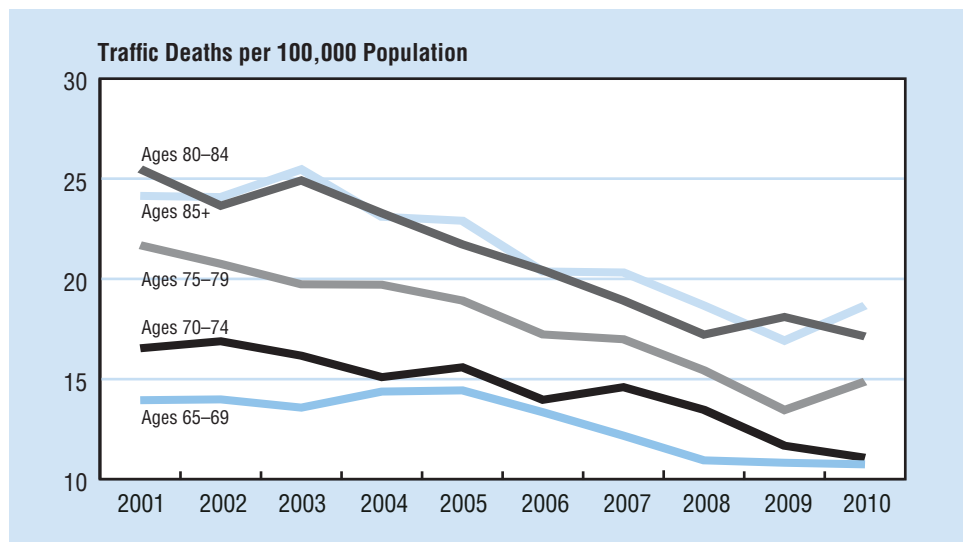
*Includes 17 pedestrian fatalities of unknown age.

Older Population Age Groups

In 2010, among the older population, the fatality rate for the 85+ age group was 18.67 per 100,000 population, which was higher than any other age group.

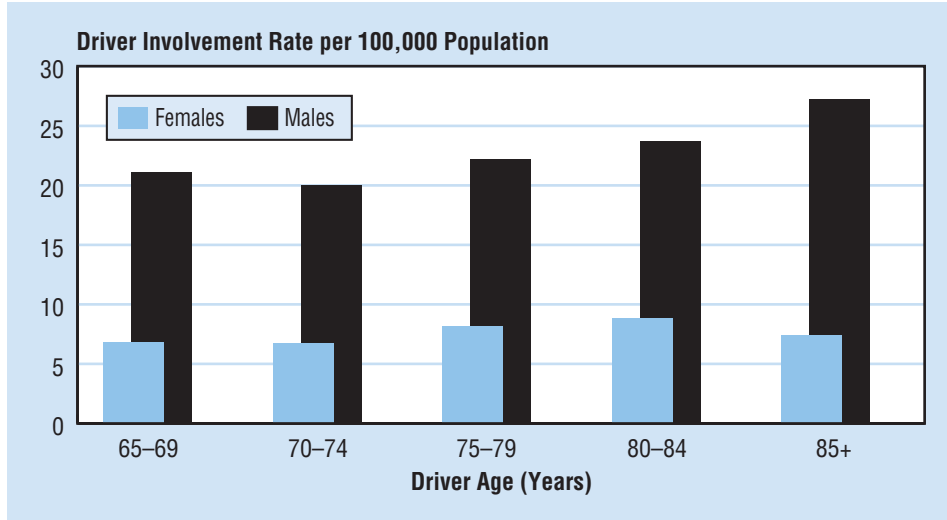
Figure 3

Motor Vehicle Traffic Fatality Rates Among Older Population by Age Group, 2001–2010



In 2010, driver involvement rates per 100,000 population among older male drivers was highest (27.28) in the 85-and-older age group; and among older female drivers was highest in the 80-84 age group (8.85).

Figure 4
Involvement Rates for Older Drivers in Fatal Crashes by Age Group and Sex, 2010



Driver involvement in fatal traffic crashes by driver ages and fatalities in those crashes can be found in Tables 5 and 6.

For more information:

Information on traffic fatalities is available from the National Center for Statistics and Analysis (NCSA), NVS-424, 1200 New Jersey Avenue SE., Washington, DC 20590. NCSA can be contacted at 800-934-8517 or via the following e-mail address: ncsaweb@dot.gov. General information on highway traffic safety can be accessed by Internet users at www.nhtsa.gov/NCSA. To report a safety-related problem or to inquire about motor vehicle safety information, contact the Vehicle Safety Hotline at 888-327-4236.

Other fact sheets available from the National Center for Statistics and Analysis are *Alcohol*, *African American*, *Bicyclists and Other Cyclists*, *Children*, *Hispanic*, *Large Trucks*, *Motorcycles*, *Occupant Protection*, *Overview*, *Pedestrians*, *Race and Ethnicity*, *Rural/Urban Comparisons*, *School Transportation-Related Crashes*, *Speeding*, *State Alcohol Estimates*, *State Traffic Data*, and *Young Drivers*. Detailed data on motor vehicle traffic crashes are published annually in *Traffic Safety Facts: A Compilation of Motor Vehicle Crash Data from the Fatality Analysis Reporting System and the General Estimates System*. The fact sheets and annual Traffic Safety Facts report can be accessed online at www-nrd.nhtsa.dot.gov/CATS/index.aspx.



U.S. Department
of Transportation
**National Highway
Traffic Safety
Administration**

Table 5

Driver Involvement in Fatal Traffic Crashes by State and Age Group, 2010

State	Total*	Total 65+	Percentage of Total	Age Group (Years)								
				<16	16-20	21-34	35-54	55-69	70-74	75-79	80-84	85+
Alabama	1,161	138	11.9	7	133	360	375	195	28	24	18	14
Alaska	75	8	10.7	1	6	18	28	18	2	1	0	1
Arizona	978	127	13.0	2	74	264	339	157	23	23	24	16
Arkansas	743	87	11.7	1	57	269	229	127	16	19	7	15
California	3,651	378	10.4	7	329	1,139	1,223	571	68	71	64	48
Colorado	599	67	11.2	3	61	179	205	92	13	18	11	10
Connecticut	421	43	10.2	0	32	142	142	65	4	11	5	13
Delaware	136	14	10.3	1	14	48	40	22	3	3	2	1
Dist of Columbia	28	1	3.6	0	0	16	10	1	0	0	1	0
Florida	3,426	508	14.8	11	319	1,043	1,068	544	117	102	88	60
Georgia	1,682	225	13.4	6	169	484	540	291	52	38	37	25
Hawaii	152	15	9.9	1	13	60	43	22	4	1	2	5
Idaho	253	38	15.0	6	27	76	76	44	6	4	5	9
Illinois	1,311	156	11.9	2	144	408	418	195	31	25	30	27
Indiana	1,091	147	13.5	4	121	297	392	156	46	31	23	12
Iowa	544	78	14.3	5	57	127	178	120	18	9	11	18
Kansas	571	91	15.9	3	70	154	184	87	15	23	19	13
Kentucky	1,037	123	11.9	8	106	297	384	154	24	26	18	14
Louisiana	916	69	7.5	3	104	296	333	123	20	12	7	5
Maine	203	32	15.8	0	24	57	52	47	5	8	5	5
Maryland	683	86	12.6	1	57	214	222	114	23	15	13	8
Massachusetts	403	55	13.6	0	51	129	109	69	13	9	14	7
Michigan	1,311	184	14.0	9	148	324	448	229	36	28	31	38
Minnesota	592	75	12.7	3	62	162	199	106	20	20	8	9
Mississippi	799	92	11.5	6	80	224	293	133	22	11	12	14
Missouri	1,141	158	13.8	5	116	296	405	195	29	34	26	20
Montana	218	31	14.2	3	28	61	63	43	9	4	2	3
Nebraska	249	41	16.5	5	31	65	79	41	9	4	8	7
Nevada	346	54	15.6	0	23	90	118	67	11	11	12	7
New Hampshire	168	27	16.1	0	17	39	59	31	5	5	4	7
New Jersey	793	116	14.6	2	67	222	256	138	23	26	13	21
New Mexico	445	39	8.8	4	48	145	149	63	12	8	4	4
New York	1,559	220	14.1	3	142	447	502	270	37	45	37	40
North Carolina	1,778	229	12.9	4	198	511	609	282	53	48	41	17
North Dakota	145	12	8.3	3	14	42	52	23	2	1	4	1
Ohio	1,504	195	13.0	3	156	441	506	250	42	28	31	32
Oklahoma	893	104	11.6	3	94	254	322	130	22	23	11	17
Oregon	415	66	15.9	0	36	101	135	85	14	12	17	10
Pennsylvania	1,775	268	15.1	4	197	484	608	271	61	62	31	36
Rhode Island	84	11	13.1	1	6	25	31	11	3	0	1	3
South Carolina	1,081	119	11.0	0	108	337	375	186	26	14	13	12
South Dakota	184	32	17.4	4	17	48	58	34	6	6	7	4
Tennessee	1,380	171	12.4	4	137	394	479	241	40	28	24	23
Texas	4,117	376	9.1	12	449	1,365	1,366	581	80	73	48	46
Utah	302	36	11.9	1	36	95	101	46	9	10	1	3
Vermont	87	21	24.1	1	5	27	21	18	3	6	4	2
Virginia	989	128	12.9	2	99	280	323	184	35	22	18	19
Washington	617	68	11.0	3	62	196	189	107	11	7	12	18
West Virginia	406	60	14.8	1	39	102	142	83	8	13	10	7
Wisconsin	813	116	14.3	1	90	230	256	144	33	19	14	21
Wyoming	185	25	13.5	1	14	41	69	44	6	4	4	2
U.S. Total	44,440	5,560	12.5	160	4,487	13,125	14,803	7,250	1,198	1,045	852	769
Puerto Rico	447	38	8.5	1	48	171	121	58	7	7	3	2

*Includes drivers of unknown age. The United States had 751 drivers of unknown age.

Table 6

Fatalities in Traffic Crashes by State and Age Group, 2010

State	Total*	Total 65+	Percentage of Total	Age Group (Years)								
				<16	16-20	21-34	35-54	55-69	70-74	75-79	80-84	85+
Alabama	862	118	13.7	45	100	244	249	142	22	24	19	15
Alaska	56	8	14.3	5	6	10	16	14	2	1	1	1
Arizona	762	143	18.8	33	58	192	221	151	28	25	27	25
Arkansas	563	82	14.6	15	62	185	156	86	13	20	7	19
California	2,715	470	17.3	97	245	737	803	472	70	95	92	97
Colorado	448	65	14.5	22	49	119	127	78	9	22	12	10
Connecticut	319	51	16.0	8	29	102	96	45	6	8	9	16
Delaware	101	13	12.9	6	10	31	33	12	1	4	3	1
Dist of Columbia	24	4	16.7	2	0	11	5	3	2	0	0	1
Florida	2,445	496	20.3	91	212	652	675	426	110	93	98	86
Georgia	1,244	217	17.4	79	116	294	356	234	45	34	45	36
Hawaii	113	22	19.5	3	13	35	32	13	5	4	4	4
Idaho	209	29	13.9	19	22	61	51	36	6	5	3	6
Illinois	927	140	15.1	33	111	281	255	140	29	20	29	29
Indiana	754	138	18.3	32	96	174	234	110	37	32	24	15
Iowa	390	68	17.4	19	49	90	102	77	15	12	11	15
Kansas	431	80	18.6	24	56	114	107	69	13	17	16	15
Kentucky	760	122	16.1	49	65	203	246	117	21	25	17	17
Louisiana	710	58	8.2	42	87	200	247	89	18	14	6	5
Maine	161	33	20.5	6	23	46	34	26	6	6	6	8
Maryland	493	79	16.0	16	48	150	144	74	16	12	14	16
Massachusetts	314	55	17.5	6	29	99	79	54	12	15	10	9
Michigan	942	177	18.8	39	100	223	285	149	34	32	31	49
Minnesota	411	72	17.5	26	40	112	104	72	12	18	12	15
Mississippi	641	85	13.3	32	62	176	205	102	23	12	14	15
Missouri	819	145	17.7	26	92	211	256	128	24	29	29	24
Montana	189	34	18.0	13	29	47	41	39	8	4	5	3
Nebraska	190	36	18.9	13	20	53	47	29	5	6	10	7
Nevada	257	53	20.6	9	19	51	88	49	8	12	13	8
New Hampshire	128	24	18.8	2	15	34	33	25	3	4	4	8
New Jersey	556	136	24.5	15	42	158	146	89	28	27	27	23
New Mexico	346	45	13.0	19	47	96	97	52	9	16	2	8
New York	1,200	267	22.3	53	125	304	298	196	29	54	67	66
North Carolina	1,319	203	15.4	57	153	348	409	201	46	41	38	26
North Dakota	105	11	10.5	7	7	28	37	17	1	1	4	3
Ohio	1,080	178	16.5	46	122	289	311	177	34	23	36	42
Oklahoma	668	92	13.8	39	67	164	234	95	18	22	10	19
Oregon	317	63	19.9	11	33	69	90	61	10	15	17	11
Pennsylvania	1,324	246	18.6	44	161	341	395	181	50	58	40	53
Rhode Island	66	16	24.2	4	5	15	24	7	2	3	1	5
South Carolina	810	117	14.4	25	90	237	254	126	23	17	17	18
South Dakota	140	29	20.7	10	14	31	40	26	4	5	5	5
Tennessee	1,031	165	16.0	37	95	260	336	183	31	33	26	29
Texas	2,998	362	12.1	148	344	909	892	445	62	77	55	59
Utah	236	44	18.6	22	25	63	58	38	9	14	3	4
Vermont	71	18	25.4	3	7	25	9	12	2	6	5	2
Virginia	740	119	16.1	18	83	188	243	115	25	25	19	24
Washington	458	73	15.9	21	50	132	113	86	12	9	13	21
West Virginia	315	58	18.4	12	34	73	94	58	7	13	12	12
Wisconsin	572	107	18.7	21	66	153	152	95	24	21	14	26
Wyoming	155	18	11.6	4	8	43	55	33	4	3	3	2
U.S. Total	32,885	5,484	16.7	1,428	3,441	8,863	9,614	5,354	1,033	1,088	985	1,033
Puerto Rico	340	55	16.2	12	31	97	94	66	12	10	6	1

*Total includes fatalities of unknown age. The United States had 46 fatalities of unknown age.